

Memory Improve Professional

Memory Solution Studio

www.memoryimproveprofessional.com



Pages Order

Introduction	Pages 3
Purchase Memory Improve Professional	Pages 4
Use Memory Improve Professional	Pages 5-20
Overview.....	Pages 5-6
General Optimization.....	Pages 7-10
Advanced Optimization.....	Pages 11-15
System Tuneup.....	Pages 16-17
Process Control.....	Pages 18
Program Settings.....	Pages 19-20
About Memory Solution Studio	Pages 21
FAQs	Pages 22-23

www.memoryimproveprofessional.com



Introduction

Use **Memory Improve Professional** to monitor and automatically resolve your memory issues. Windows is capable of running many programs at the same time. This is great for users, enabling the existence of some tools that work constantly in the background and provide useful services. **Memory Improve Professional** is one of such tools. It is a useful utility to monitor and manage system memory. It easily indicates the current state of memory consumption and can (automatically or manually) free up additional memory. It improves system performance by freeing and defragging memory. This decreases load time and improves application performance.



Windows 2000/XP/2003/Vista compatible

www.memoryimproveprofessional.com



Purchase Memory Improve Professional

Free Version Limitations:

Time Limitation: Maximum 28 free trials within 14 days.

Function Limitation: Advance optimization module is not available during evaluation period.

Registration Benefits:

Full functions of Memory Improve Professional.
Fun in unlimited memory monitoring.

Free technical support

We are pleased to offer our care to meet your needs. We promise our customers, any customer questions will be satisfied within 1 business day!

Yours for only \$13.95(2-year License). [GET NOW!](#)

www.memoryimproveprofessional.com



Information Overview

Learn the information about Memory Improve Professional before you start using it.



A: Indicates the percentage of physical memory used by running processes.

B: Free memory button.

C: Defrag memory button.

D: General Optimization panel.

Set parameters on the panel and free memory and defrag memory automatically.

E: Advanced Optimization panel.

These intelligent features of this tab are available after registration. The module can establish relevant optimization strategies automatically, and optimize system performance in real time. It makes your system work with greater stability. (Not available in Free Version)

F: System Tuneup panel.

Users can optimize system performance by changing settings.

G: Process control panel.

All applications running on your PC are listed. Users can perform a set of operations on selected process.

H: Program Settings:

Some configuration settings of Memory Improve Professional are on the tab.

www.memoryimproveprofessional.com



Free up memory

Memory Improve Professional will help you to enhance your PC's performance by safely freeing memory.

Users can free up memory manually or automatically:

1. Free memory manually by clicking "**Free up Recommended**" button on main window.



2. Free memory automatically.

2.1 Tick the "**Free up memory automatically**"checkbox on General Optimization tab

2.2 Interval glide bar: Set time interval (minute)

2.3 Rule lists: Select one or two list ("**White List**", "**Auto list**", "**Black List**", "**Idle list**") as reference rule:

White list: The processes listed in white list will be permitted to use physical memory unlimitedly. When you free up memory automatically, the memory used by these processes in white list will not be freed while memory used by the processes unlisted in White list will be freed. Just add frequently used processes in White list.

Auto list: Auto list can be considered as an intelligent White List, however, it is not edited manually by user, but generated and maintained by the process automatically. The unique intelligent learn module of Memory Improve Master will learn user's habit constantly, analyze and recognize the applications used by user, then add these frequently used applications into Smart List automatically.

Black list: The memory used by processes listed in black list will be released directly when you perform "Free up memory" operation.

Idle list: Idle List can be considered as a dynamic Black List. If the usage of a process is "0", the process will be added into Idle List automatically. The memory used by processes listed in Idle list will be released. Data in Idle List is dynamic and does not need editing.

www.memoryimproveprofessional.com



Defrag memory

Defrag memory enables users to reclaim memory in minutes. However, defrag memory can be performed only when a great deal of available physical memory needed. Don't perform the operation frequently.

Users can defrag memory manually or automatically:

1. Defrag memory manually: Click "defrag" button on main window.



2. Follow the steps below to defrag memory automatically.

On Memory Optimization tab, tick the "Defrag memory automatically" box

Monitor interval: You can choose interval between 1 minute and 10 minutes to monitor your memory usage.

Low Value: Specify value on the bar. Memory Improve professional will defrag memory if

available memory falls below specified value.

Defrag Size: Specify desired amount of memory you want to reclaim.

Specify a percentage and tick the box in front of "Do not defrag..."to enable CPU protection when CPU usage exceeds specified value.

www.memoryimproveprofessional.com



Advanced Optimization

Memory Improve Professional features the intelligent optimization module which performs intelligent monitoring / analysis of system running.

Ps: The advanced optimization tab makes your system work with greater stability. The features on the tab are available after registration.



www.memoryimproveprofessional.com



Smart Analyzer

Memory Improve Professional features the intelligent optimization module which performs intelligent monitoring / analysis of system running.

Ps: The advanced optimization tab makes your system work with greater stability. The features on the tab are available after registration.



Smart analyzing module will learn user's habit constantly, analyze and recognize the frequently used applications, then add these processes into Auto List automatically. To monitor the Smart module, you must specify these parameters:

Interval

Set the time interval, Memory Improve Professional will learn automatically according specified

time interval.

Attention:

Select a number among 1~30. (If you select 3, Memory Improve Professional will add the top 3 of the most frequently used processes in Auto List.

Period

Select a time limit among 1~90 to keep data collected by intelligent analyzing module. (E.g. Select 10, Memory Improve Professional will clear data intelligent analyzing module.

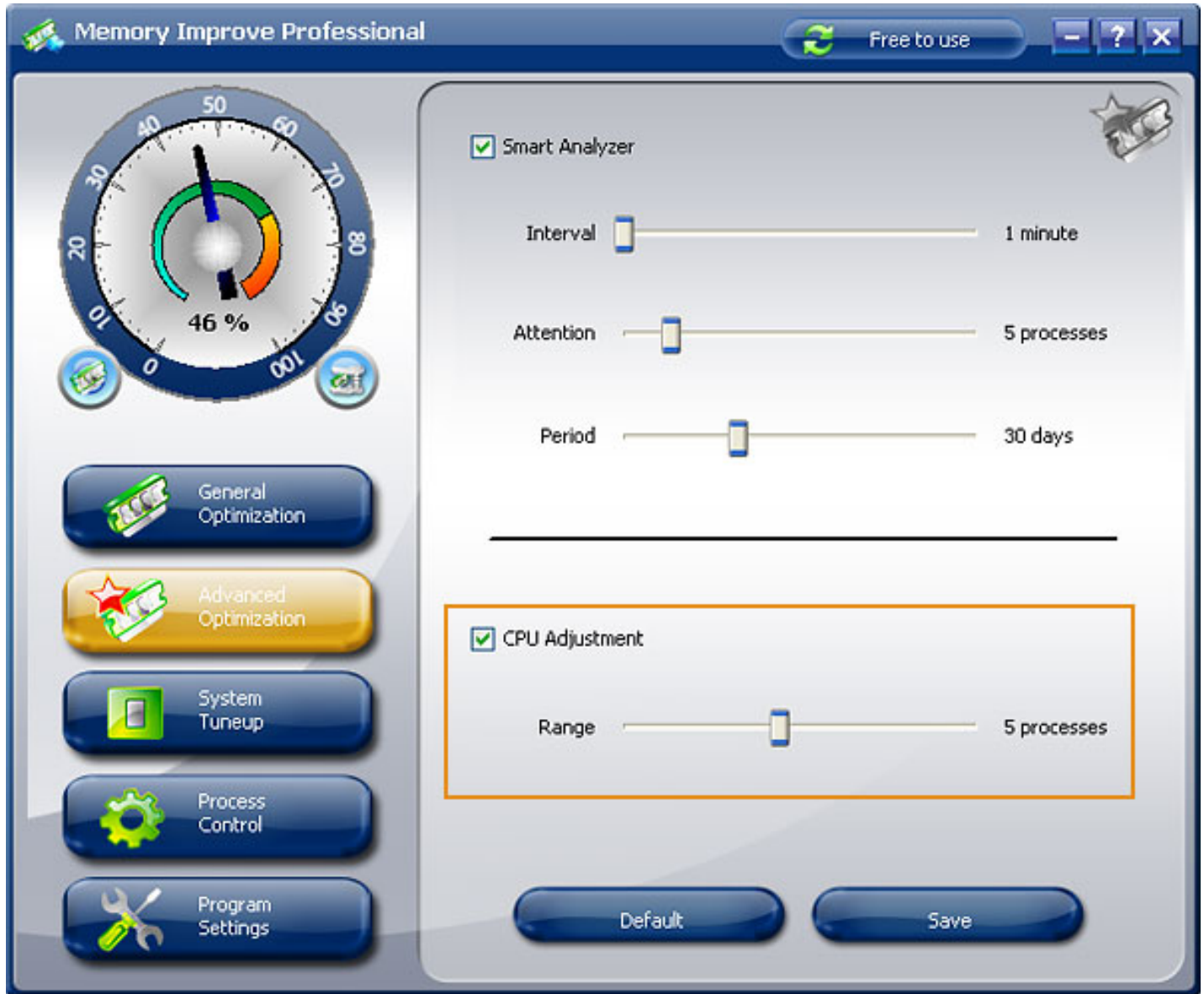
www.memoryimproveprofessional.com



CPU Adjustment

Memory Improve Professional features the intelligent optimization module which performs intelligent monitoring / analysis of system running.

Ps: The advanced optimization tab makes your system work with greater stability. The features on the tab are available after registration.



CPU Adjustment module will monitor CPU usage in real time and adjust priority of CPU allocation automatically. The applications that are currently in use earn priority to use CPU, which makes applications run effectively.

To make applications run more effectively, you must adjust:

Range

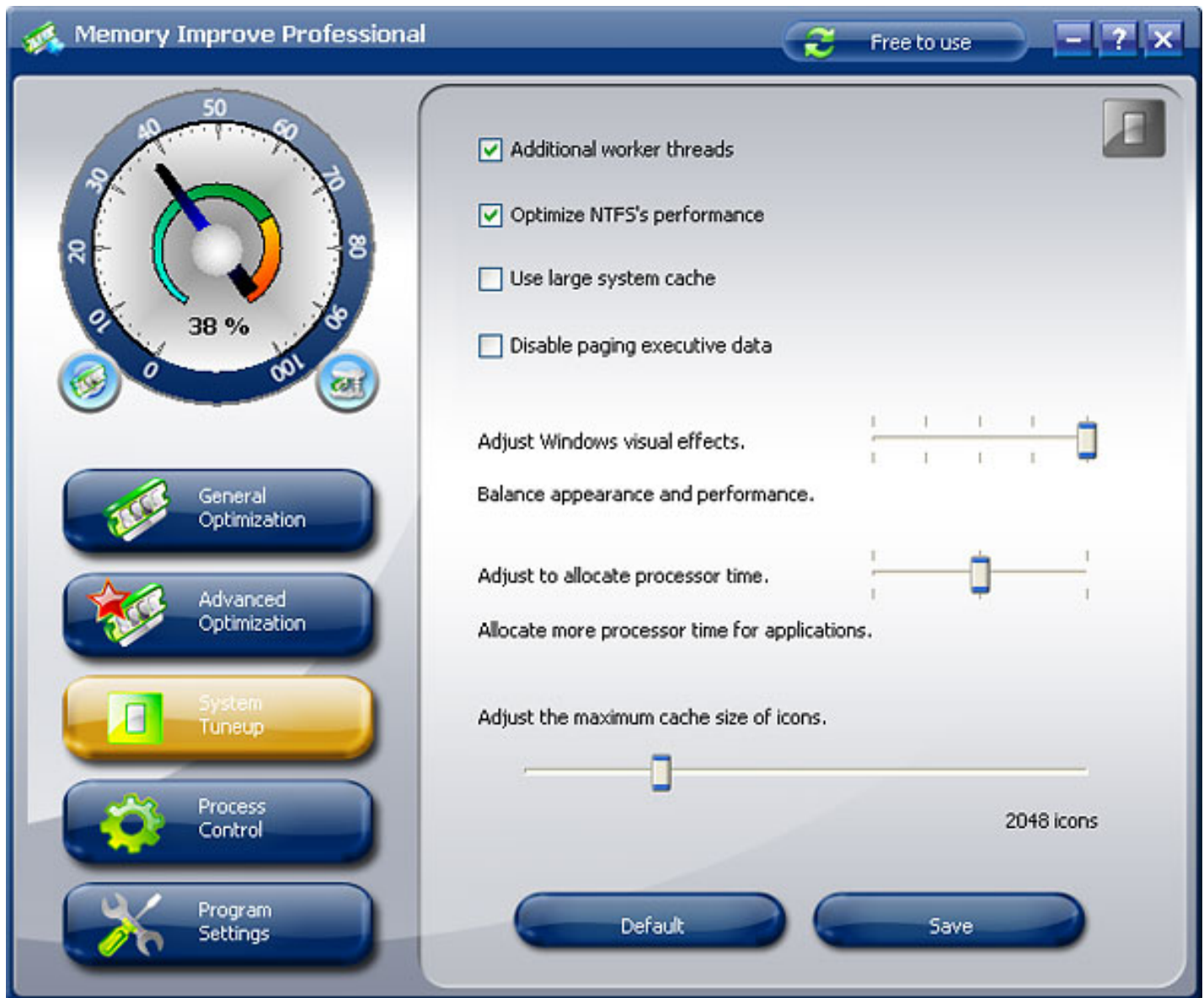
Select value among 1~10. E.g. select 4, then 4 applications that have been used recently may take the priority to use CPU.

www.memoryimproveprofessional.com



System Tuneup

On System Tuneup tab, you can optimize system performance by changing settings.



Performance Settings

- Adjust Windows visual effects.
- Allocate processor time.
- Additional worker threads.
- Optimize NTFS's performance.
- Enable UDMA66 Mode.

Cache Settings

- Use large system cache.
- Disable paging executive data.
- Always unload DLLs.

Adjust the maximum cache size of icons.

Note: The Default settings suggested. It is NOT recommended to apply these settings blindly unless you are an advanced user or are confident of the function of each setting.

www.memoryimproveprofessional.com



Process Control

The "Processes Control" tab presents you all running processes on your PC, whether they are in the background or foreground. It shows how much RAM each program is using. It allows you to perform operations to processes.

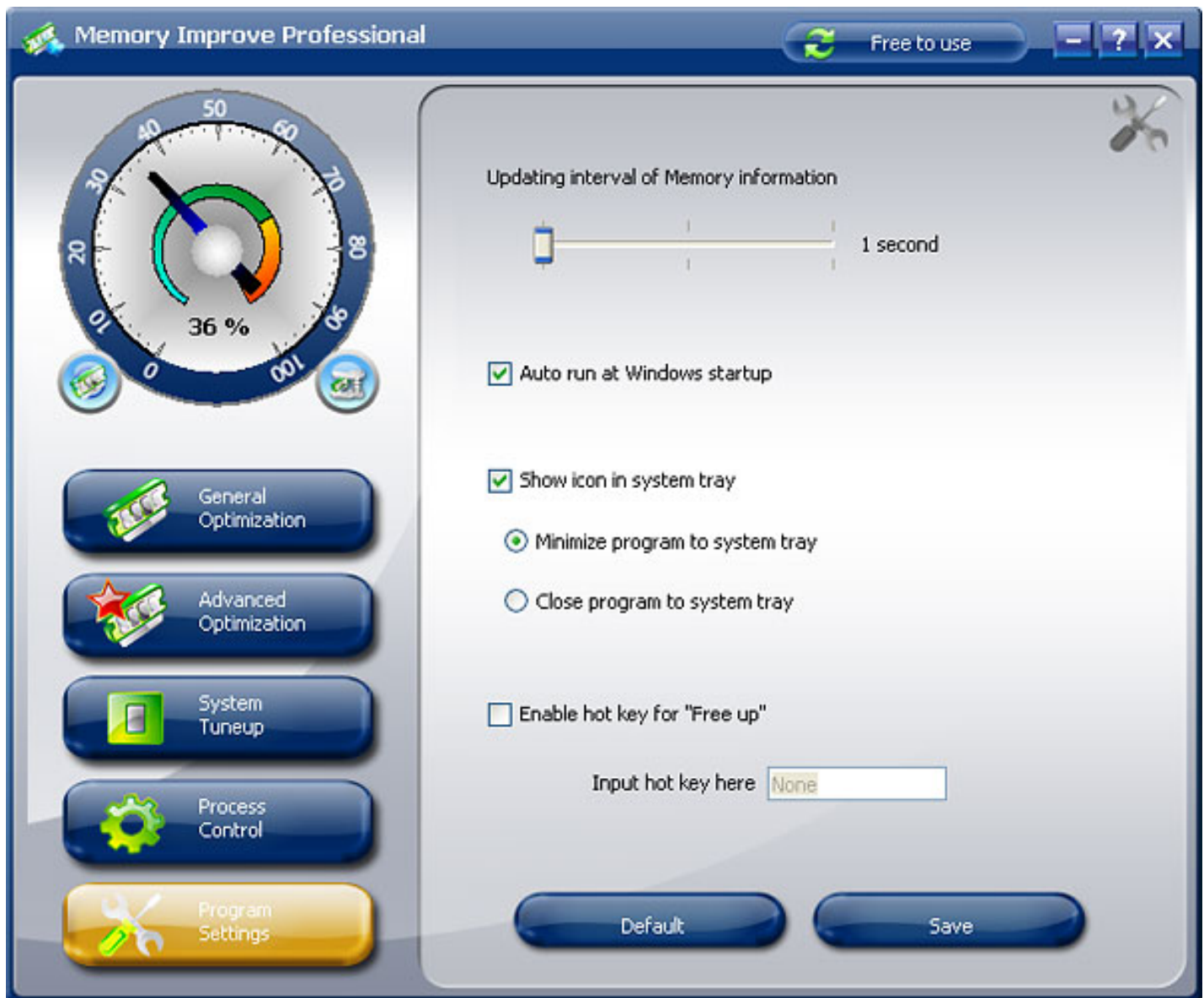
The screenshot displays the 'Process Control' tab of the Memory Improve Professional application. On the left, a circular gauge indicates that 36% of memory is currently used. Below the gauge are five navigation buttons: 'General Optimization', 'Advanced Optimization', 'System Tuneup', 'Process Control' (which is highlighted in yellow), and 'Program Settings'. The main area on the right is titled 'Process List' and shows 36 processes. Below the list are two buttons: 'Free Up' and 'Kill Process'.

Name	PID	Memory(KB)	Priority
System Idle Process	0	16	Normal
System	4	308	Normal
smss.exe	852	44	Normal
winlogon.exe	952	1,692	High
services.exe	996	1,140	Normal
lsass.exe	1008	1,440	Normal
svchost.exe	1176	1,064	Normal
svchost.exe	1332	1,632	Normal
avp.exe	1656	2,760	Normal
stormliv.exe	1668	264	Normal
inetinfo.exe	1704	816	Normal
MDM.EXE	1736	572	Normal
svchost.exe	1820	1,272	Normal
explorer.exe	2600	12,064	AboveNormal
360tray.exe	2712	1,544	Normal
avp.exe	2724	1,488	Normal
ctfmon.exe	2756	480	Normal
msmsgs.exe	2788	352	Normal
daemon.exe	2796	140	Normal
usnsvc.exe	3688	372	Normal
msimn.exe	2536	744	Normal
xdict.exe	2572	5,120	Normal
hh.exe	2216	13,732	High
SnagIt32.exe	2468	9,548	AboveNormal
TSCHelp.exe	868	3,008	Normal
MemoryImproveProfes...	2440	15,744	AboveNormal

Free Up: You can release memory by either selecting a process in the list and clicking Free Up button or right clicking a process in the list and selecting Free Up.

Kill Process: You can terminate a process by either selecting a process in the list and clicking Kill Process or right clicking a process and select Kill Process.

Program Settings



Updating interval of memory information: Set a interval among 1 minute~3 minutes to refresh memory information.

Auto run at windows startup: Tick the box to run Memory Improve Professional on Windows startup

Show notify icon in system tray: You will see an icon in the system tray after you check it, this icon ensures that Memory Improve Professional is currently running.

Minimize to system tray: Select the item to have Memory Improve Professional work in the background with an icon in the system tray.

Close to system tray: Check it to close Memory Improve Professional, but continue to work in the background with an icon in the system tray.

Enable hot key for Free up: When checked, you can specify the key combination you wish to

use, then Memory Improve Professional will free memory whenever you press the specified key combinations.

www.memoryimproveprofessional.com



About Memory Solution Studio

Being a shareware developer of Windows Operating System solutions, **Memory Solution Studio** take the lead in this domain. We have professional experience in execution of our policy - Think as A Customer, which has given us the idea to create reliable and easy-to-use software

Contact us:

Email: support@memoryimproveprofessional.com

For further information, please visit www.memoryimproveprofessional.com

www.memoryimproveprofessional.com



FAQs

» Is online order secure?

Yes, it is 100% secure. We promise the most secure purchase as we did for years. Magic do e-business via 2 reliable third parties - ShareIt and RegNow. You could choose one you trusted or experienced.

» Can I make a payment by check?

Yes, we take payment via the third party. You could use ShareIt, RegNow. They are all highly trusted in worldwide. You could choose one you experienced and trusted. We strongly recommend ShareIt as your first choice.

» How to report bugs?

Please bugs or suggestions to support@memoryimproveprofessional.com. We will reply within 24 hours.

» Is Technical Support provided?

Yes, FREE technical support is provided for all registered users. If you have queries, suggestions or feedback, please feel free to contact our technical team: support@memoryimproveprofessional.com

» How can I reinstall the program?

If you are a registered user, just enter the license you had before, and then you could use it as usual.

» Why is it so important?

Memory is important because it's what keeps your computer running quickly. When you have a lot of programs running, which may consume all your memory, and then your computer has to use your hard disk for memory. Because hard disks are almost a hundred times slower than memory, your computer slows to a crawl when it runs out of memory. It also often becomes unstable.

» Can Memory Improve professional make my system unstable?

No. It increases the amount of available memory to applications. Your system will become more stable.

» What are the differences between trial version and full version

Trial version of the software can be downloaded for free which works effectively. Page 12

14 days, and the Advanced Optimization module is not available during evaluation period. After 14 days the software expires and you need to purchase Full version of the software. A lifetime license for full functions of Memory Improve Professional can be purchased for only **\$13.95(2-year License)**. [GET NOW!](#)

» **Will Memory Improve professional Speed Up My Computer?**

Memory Improve professional frees up more RAM memory, your computer would be able to process information faster.

» **How to free memory?**

1. Free memory manually by clicking "**Free up Recommended**" button on main window.

2. Free memory automatically.

2.1 Tick the "**Free up memory automatically**"checkbox on General Optimization tab

2.2 Interval glide bar: Set time interval (minute)

2.3 Rule lists: Select one or two list ("**White List**", "**Auto list**", "**Black List**", "**Idle list**") as reference rule.

» **Can Memory Improve Professional free memory with hotkey?**

Of course, on **Configuration Settings** tab, check "**Free Memory Now**" hot key, You may specify the key combination you wish to use, and click **Set** button, then Memory Improve Master will free memory whenever you press the specified key combinations.

» **I have registered the software, but lost my registration details - what can I do now?**

It is very important that you save your Original Receipt (at least your Order ID) or Registration Email. If it is lost, we will need the email address you used while registering, as we will send the registration details only to the Registration email address.

» **How can I get additional support for Memory Improve Professional?**

Please visit our [website](#) to get additional product information, help, and support.

www.memoryimproveprofessional.com

